

EXPERIENCE  
**20**  
YEARS

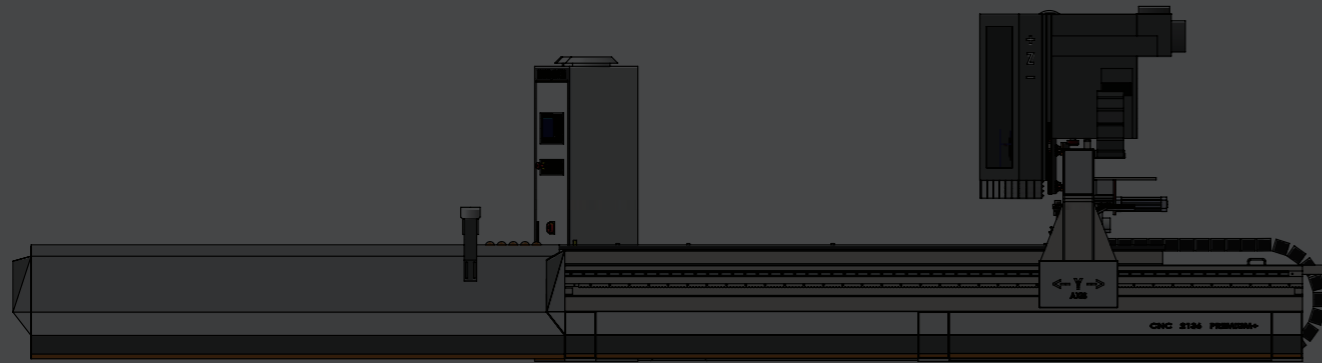
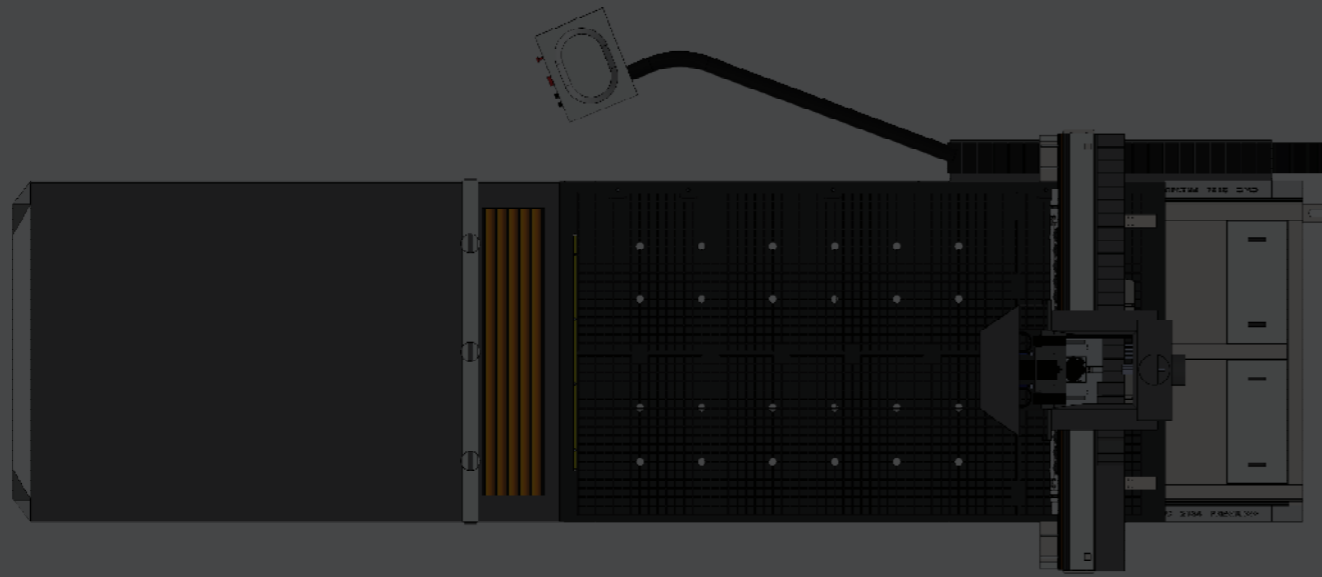


CNC WOODWORKING  
MACHINE SERIES /



[www.makserpress.com.tr](http://www.makserpress.com.tr)

**MAKSERTEAM**  
WOODWORKING MACHINE



## CNC WOODWORKING MACHINE SERIES

Premium seriesi, farklı uygulamaları bir araya getirebilen, pratik , hızlı esnek üretim sistemine sahip bir üretim hattıdır. Otomatik yükleme ünitesi, otomatik boşaltma ve tabla temizleme sistemi ile gerçek bir ÜRETİM HATTI !!

Premium seriesi is a production line with a practical, fast flexible production system that can bring together different applications. A real PRODUCTION LINE with automatic loading unit, automatic unloading and table cleaning system!!

MODEL / MODELS

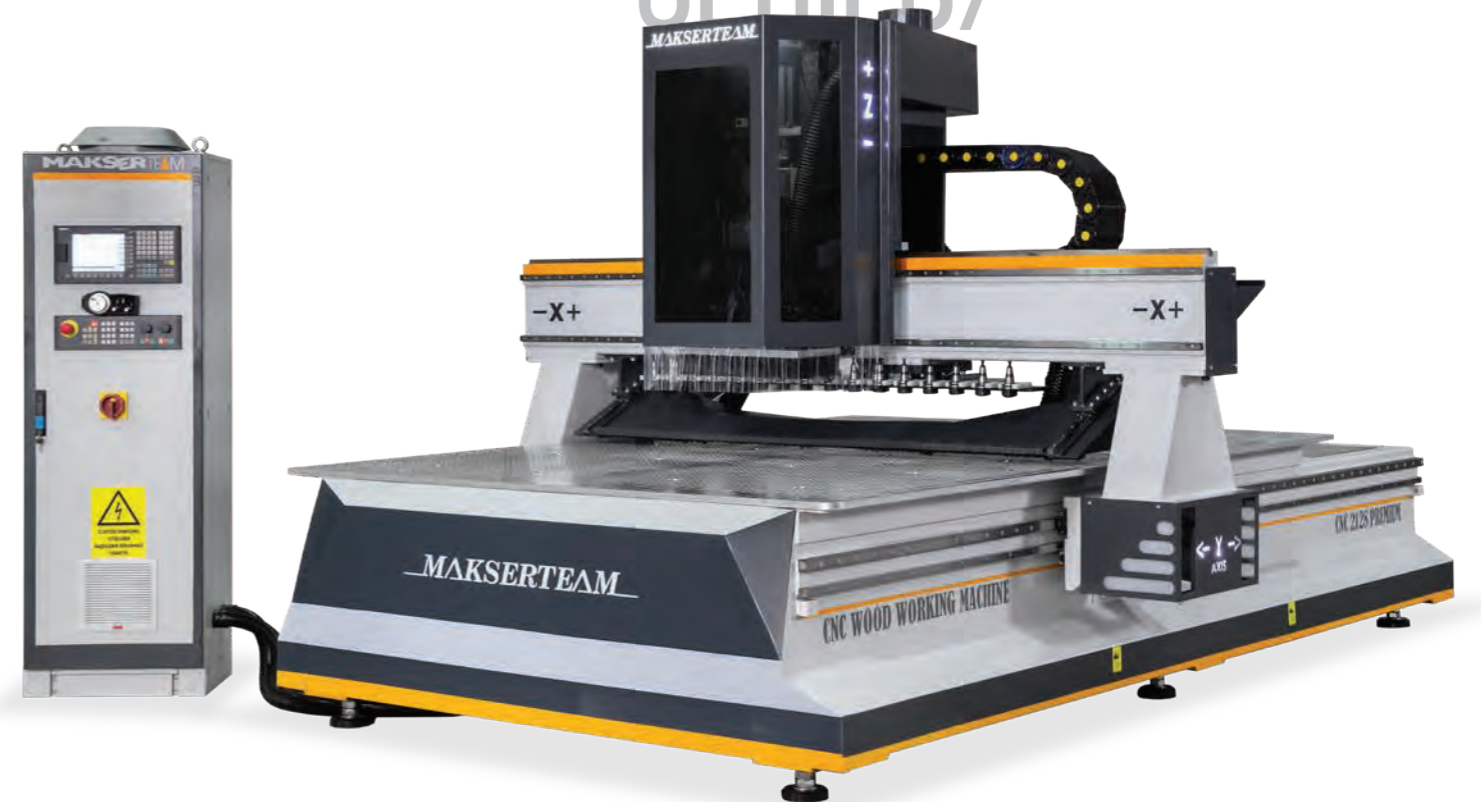
CNC 1428 PREMIUM  
CNC 2128 PREMIUM  
CNC 2136 PREMIUM

CNC 1428 II T PREMIUM  
CNC 2128 II T PREMIUM  
CNC 2136 II T PREMIUM

CNC 2128 FLATDOOR PREMIUM

[www.makserpress.com.tr/](http://www.makserpress.com.tr/)

NEW  
GENERATION  
WOOD  
PROCESSING  
CNC MACHINE  
PREMIUM  
SERIES /





Yeni nesil boşaltma sistemi ve beraberinde gelen tabla temizleme sistemi ile birlikte, verimliliği en üst düzeye taşıdık.

We have maximized efficiency with the new generation unloading system and the accompanying table cleaning system.



THE  
EVOLUTION  
OF  
WOOD  
WORKING  
MACHINE



## I ŞASE / CHASSIS

Yeni nesil güçlendirilmiş, korozyona dayanıklı, şase yapısı, üretimi kolaylaştıran birçok seçenek ve müşteri üretim sistemine göre uyarlanabilir birçok opsiyonel seçenek ile, Premium serisi, seri üretim hatlarının vazgeçilmezi...

With its new generation reinforced, corrosion resistant, chassis structure, many options that facilitate production and many optional options that can be adapted to the customer production system, the Premium series is indispensable for mass production lines.

## PROFESYONEL ENDÜSTRİYEL KONTROL ÜNİTESİ / PROFESSIONAL INDUSTRIAL CONTROL SYSTEM

Kompakt ve kullanıcı dostu profesyonel çözüm, üreten, temel tornalama ve frezeleme uygulamaları için benzersiz çözüm. Profesyonel kullanım, kolay devreye alma ve bakım gibi özelliklerin yanı sıra optimum maliyet konumu, profesyonel CNC makinelerinin donatılması için mükemmel bir temeli temsil eder. Eşsiz üretim seçenekleri ve optimizasyonu ile verimliliği en üst düzeye taşır.

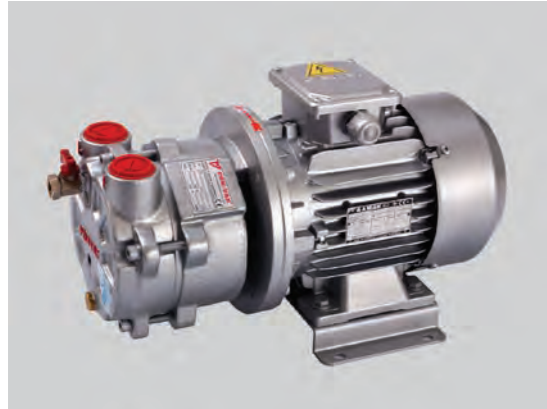
Compact and user-friendly professional solution is used for basic turning and milling applications. Features such as professional operation, easy commissioning and maintenance – and also an optimum cost position – represent the perfect basis for equipping professional CNC machines it maximizes efficiency with its unique production options and optimization



## I VAKUM POMPASI / VACUUM PUMP

Bakımsız , masrafsız , 10x10 parçaları dahi kaydırmadan çalışmayı sağlayan saf güç üreten 13 Kw 300 m3 gücünde su soğutmalı vakum pompası. %99 çekiş gücü sayesinde artık performans sınırlarının zirvesinde. Sürekli çalışmaya uygundur. Aynı zamanda 10 yıl garantili...

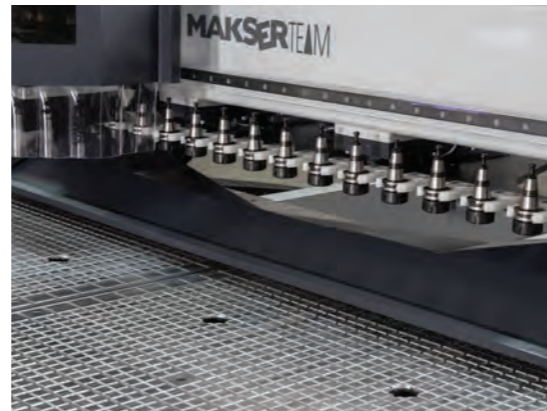
A 13 Kw 300 m3 water-cooled vacuum pump that produces pure power that allows you to work without shifting even 10x10 parts , without maintenance , at no cost. thanks to its 99% traction power, it is now at the peak of its performance limits. It is suitable for continuous operation. It also has a 10-year warranty...



## I TAKIM DEĞİŞTİRME / CHANGE TOOL

Tam otomatik 21 adete kadar yükseltilebilir, takım değiştirme ünitesi.

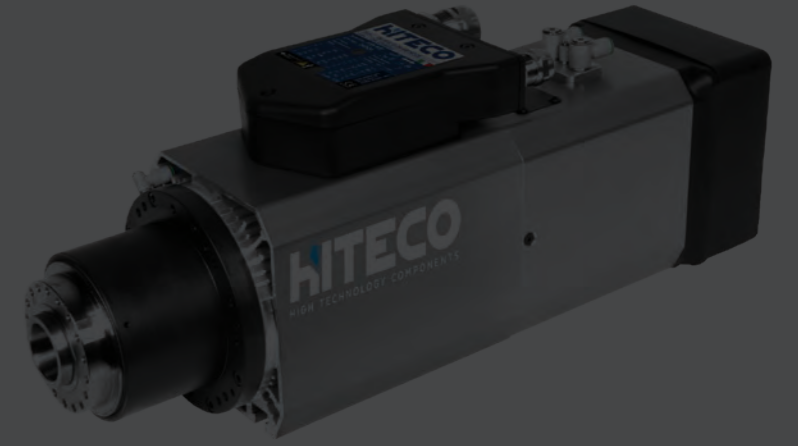
Fully automatic upgradeable to up to 21 units, tool change unit.



# THE MOST PERFECT SOLUTIONS NEW PREMIUM SERIES/

Kabin üretimlerinde benzersiz çözümler yaratan nesting , çoklu delik ünitesi ve barkod sistemleri ile güçlendiriliyor. Opsiyonel birçok seçenek ile müşteri odaklı yaklaşım.

Creating unique solutions in cabinet production, nesting is reinforced with multiple hole units and barcode systems. Customer-oriented approach with many optional options.

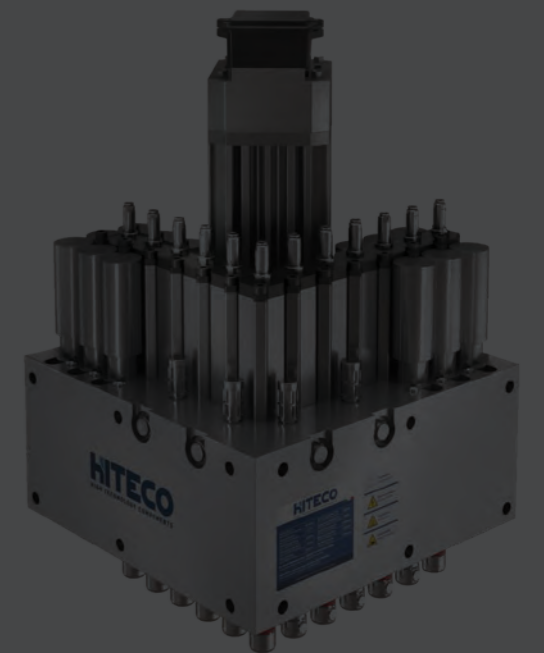


## SPINDLE MOTOR SPINDLE ENGINE

8,5 12 KW Spindle motoru, alman teknolojisi ile geliştirilmiş seramik rulman ile ahşap, kompozit alüminyum, kompakt ve benzeri daha bir çok materyali 2D 3D operasyonları yapmak oldukça kolay.

With 8,5-12 KW Spindle engine, ceramic bearing developed with German technology, it is very easy to make 2D 3D operations on wood, composite aluminum, compact and many other materials.

**Tarasımlarınızdaki hasasiyeti arttırın ve daha fazla üretin**  
Increase precision in your designs and produce faster.





CNC 2136  
ZENIT-3

UNIQUE  
SOLUTION FOR  
**3 AXIS**  
APPLICATIONS

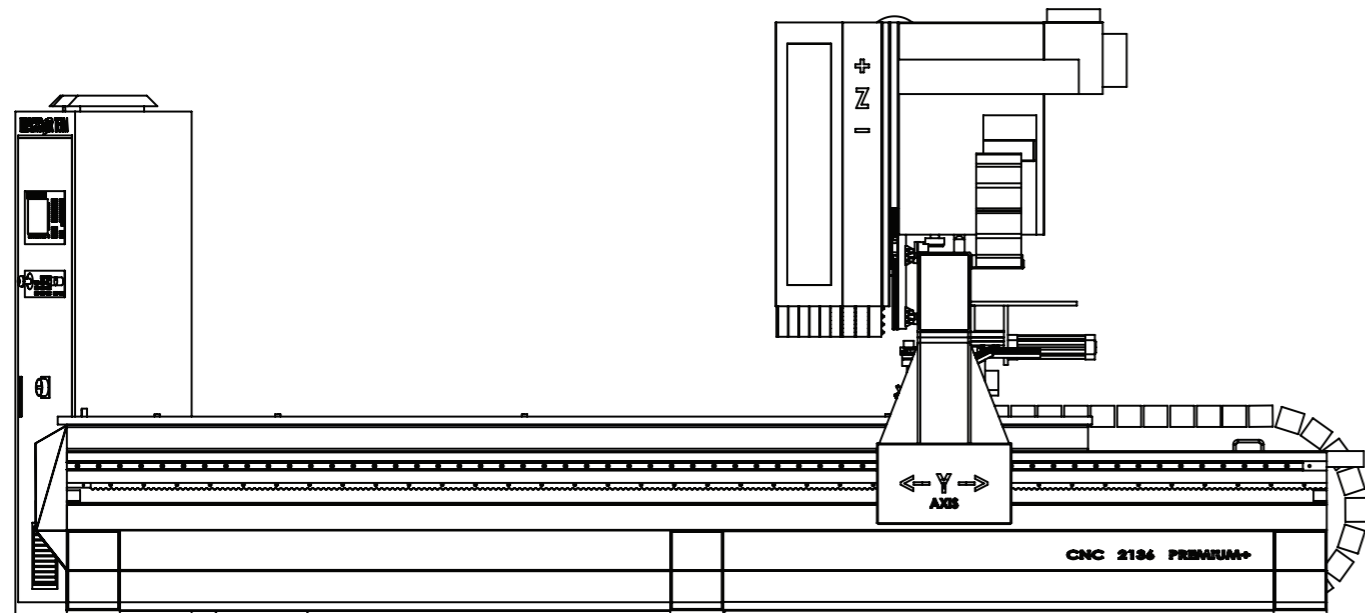
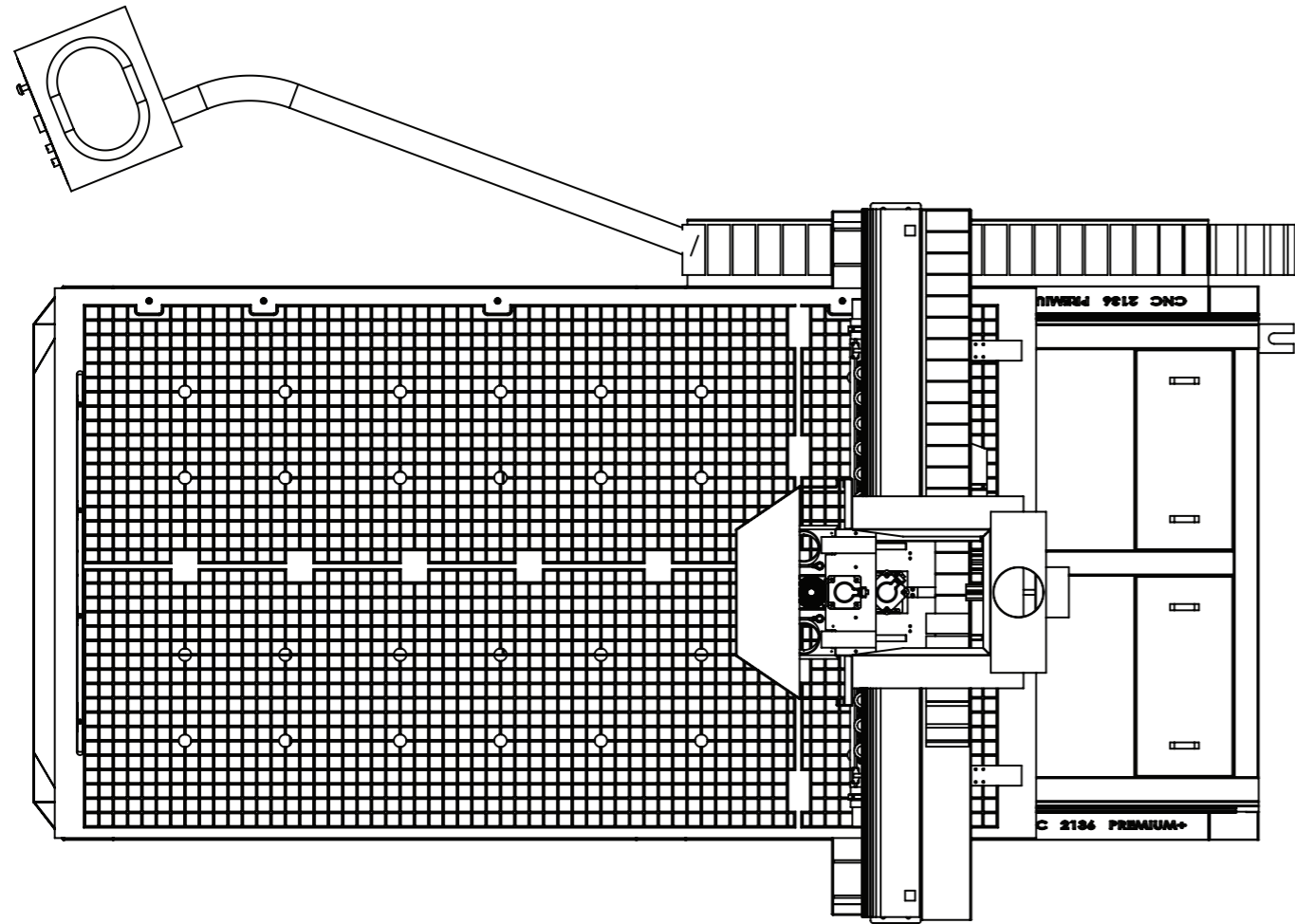
3 EKSEN UYGULAMALARI İÇİN  
BENZERSİZ ÇÖZÜM...

# Fast, Reliable & Affordable

Zenit-3 seriesi, farklı uygulamaları bir araya getirebilen, pratik , hızlı, esnek ve ekonomik üretim sistemine sahip bir üretim hattıdır.

Zenit-3 series is a production line with a practical, fast, flexible and economical production system that can bring together different applications.

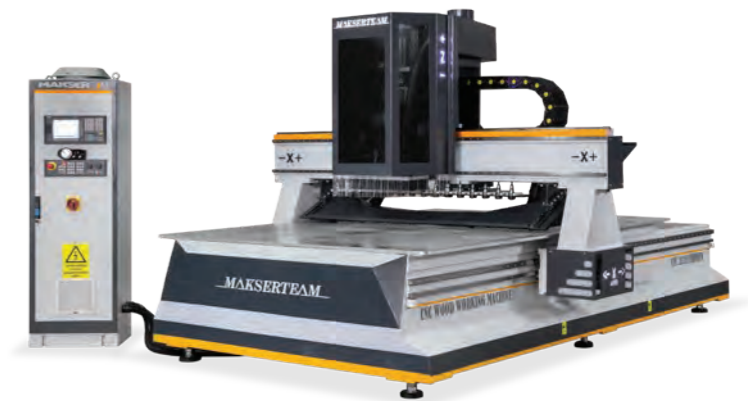




## CNC ROUTER PREMIUM SERIES

# CNC 2136 PREMIUM S

## TECHNICAL DOCUMENTATION



PRODUCTS	PRODUCTS SPECIFICATION	BRAND / MODEL
CONTROL UNIT	SINUMERIK 808D ADVANCED	SIEMENS
X AXIS SERVO MOTOR	1.5 KW 2000 D.D.	SIEMENS
Y AXIS SERVO MOTOR	1.5 KW 2000 D.D.	SIEMENS
Z AXIS SERVO MOTOR	1.0 KW 2000 D.D. WITH BRAKE	SIEMENS
HIGH PERFORMANCE SPINDLES	8.5 KW 24.000 RPM	HITECO
VACUUM PUMP	13KW 480 M3 WATER COOLED -TANK SYSTEM	POMWAK
VACUUM WORKING TABLE SIZE	11/4` 5 ZONE 32 CENTER-ACTUATED VALVE	TORK
REDUCER	3-GSN 120 BODY 1/10	FRAMO MORAT
RACK MOTION GROUP	25X25 MOD2 HELICAL	FRAMO MORAT
PINION MOTION GROUP	Z32 MOD2 HELICAL	FRAMO MORAT
AUTOMATIC LUBRICATION SYSTEM	2LT/HYDRO OIL HD 46-LOCAL TIME SETTING	OXIM
TOOL HOLDER ADAPTOR (10PCS)	HSK F63	IMS
TOOL CHANGE	16 PCS AUTOMATIC UNDER BRIDGES	MAKSER
ENEGRY CONSUME	26.5KW	-
WORKING AREA	2100X3660 Z300	-
AIR REQUIREMENT	8 BAR	-
PACKAGE SIZE	WIDTH:2820MM/LENGTH:5000MM/HEIGHT:2350MM	-
WEIGHT	3950KG	-
INSTALLATION	OUR PROFESSIONAL STAFF WILL FULLY INSTALL YOUR NEW MACHINE	
WARRANTY	1-YEAR STANDARD PARTS AND LABOR WARRANTY. 2-YEARS TECHNICAL SUPPORT HELP.	

# CNC 2136

## PREMIUM D

### TECHNICAL DOCUMENTATION



PRODUCTS	PRODUCTS SPECIFICATION	BRAND / MODEL
CONTROL UNIT	NC-300A MS-AE8"IND.	DELTA
X AXIS SERVO MOTOR	1.5 KW 2000 D.D.	DELTA
Y AXIS SERVO MOTOR	1.5 KW 2000 D.D.	DELTA
Z AXIS SERVO MOTOR	1.0 KW 2000 D.D. WITH BRAKE	DELTA
HIGH PERFORMANCE SPINDLES	8.5 KW 24.000 RPM	HITECO
VACUUM PUMP	13KW 480 M3 WATER COOLED -TANK SYSTEM	POMWAK
VACUUM WORKING TABLE SIZE	11/4` 5 ZONE 32 CENTER-ACTUATED VALVE	TORK
REDUCER	3-GSN 120 BODY 1/10	FRAMO MORAT
RACK MOTION GROUP	25X25 MOD2 HELICAL	FRAMO MORAT
PINION MOTION GROUP	Z32 MOD2 HELICAL	FRAMO MORAT
AUTOMATIC LUBRICATION SYSTEM	2LT/HYDRO OIL HD 46-LOCAL TIME SETTING	OXIM
TOOL HOLDER ADAPTOR (10PCS)	HSK F63	IMS
TOOL CHANGE	16 PCS AUTOMATIC UNDER BRIDGES	MAKSER
ENERGY CONSUME	26.5KW	-
WORKING AREA	2100X3660 Z300	-
AIR REQUIREMENT	8 BAR	-
PACKAGE SIZE	WIDTH:2820MM/LENGTH:5000MM/HEIGHT:2350MM	-
WEIGHT	3950KG	-
INSTALLATION	OUR PROFESSIONAL STAFF WILL FULLY INSTALL YOUR NEW MACHINE	
WARRANTY	1-YEAR STANDARD PARTS AND LABOR WARRANTY. 2-YEARS TECHNICAL SUPPORT HELP.	

# CNC 2136

## ZENIT D

### TECHNICAL DOCUMENTATION



PRODUCTS	PRODUCTS SPECIFICATION	BRAND / MODEL
CONTROL UNIT	NC-300A MI-AE	DELTA
X AXIS SERVO MOTOR	0.75 KW 1200 D.D.	DELTA
Y AXIS SERVO MOTOR	0.75 KW 1200 D.D.	DELTA
Z AXIS SERVO MOTOR	0.75 KW 1200 D.D.WITH BRAKE	DELTA
HIGH PERFORMANCE SPINDLES	7.5 KW 18.000 RPM	AREL
VACUUM PUMP	13KW 480 M3 WATER COOLED -TANK SYSTEM	POMWAK
VACUUM WORKING TABLE SIZE	11/4` 5 ZONE 32 CENTER-BALL VALVE	MAKSER
REDUCER	FA-100 BODY 1/10	LIMING
RACK MOTION GROUP	25X25 MOD2 HELICAL	BRL
PINION MOTION GROUP	Z32 MOD2 HELICAL	BRL
AUTOMATIC LUBRICATION SYSTEM	MANUAL	MAKSER
TOOL HOLDER ADAPTOR (10PCS)	ISO 30 - ER32	IMS
TOOL CHANGE	10 AUTOMATIC FIXED MAGAZINES	MAKSER
ENERGY CONSUME	23KW	-
WORKING AREA	2100X3660 Z250	-
AIR REQUIREMENT	8 BAR	-
PACKAGE SIZE	WIDTH:2650MM/LENGTH:5000MM/HEIGHT:2100MM	-
WEIGHT	3250KG	-
INSTALLATION	OUR PROFESSIONAL STAFF WILL FULLY INSTALL YOUR NEW MACHINE	
WARRANTY	1-YEAR STANDARD PARTS AND LABOR WARRANTY. 2-YEARS TECHNICAL SUPPORT HELP.	



EXPERIENCE  
**20**  
YEARS



## CNC WOODWORKING MACHINE SERIES /

Yedek Para ve Teknik Servis / Parts & Technical Service

**WhatsApp: +90 507 204 95 92**

[servis@makserpress.com.tr](mailto:servis@makserpress.com.tr)

Satış ve Pazarlama / Sales & Marketing

**WhatsApp: +90 507 667 90 94**

[salesmakser@makserpress.com.tr](mailto:salesmakser@makserpress.com.tr)

Hacı Sabancı Aosb Acidere Mah. Menekşe Sk. No:20 Sarıçam / Adana

**T. +90 322 346 43 19 | F. +90 322 346 43 99**

[www.makserpress.com.tr](http://www.makserpress.com.tr) | [info@makserpress.com.tr](mailto:info@makserpress.com.tr)

**MAKSERTEAM**  
WOODWORKING MACHINE